

Heritage Lottery Fund Ancient Woodland Restoration Project

Wednesday 27th April 2016
Gledhow Valley Wood
Robin Ridley – Woodland Trust



Supported by
The National Lottery[®]
through the Heritage Lottery Fund



Ancient Woodland & Restoration



WOODLAND
TRUST

Housekeeping

- Sign-in sheet
- Evaluation sheets for HLF please
- Mobiles – vibrate or off please
- Fire escapes - Fire alarm – Fire point – Car Park
- Toilets

Outline for the evening:

Woodland Trust brief background & Introduction to the HLF Ancient Woodland Restoration Project

Historic Landscape restoration & Gledhow Valley

Gledhow Valley Wood Bio-diversity overview

Buffet and short break for refreshments

Options for PAWS Restoration in Gledhow Valley Wood

Discussion



Supported by
The National Lottery[®]
through the Heritage Lottery Fund



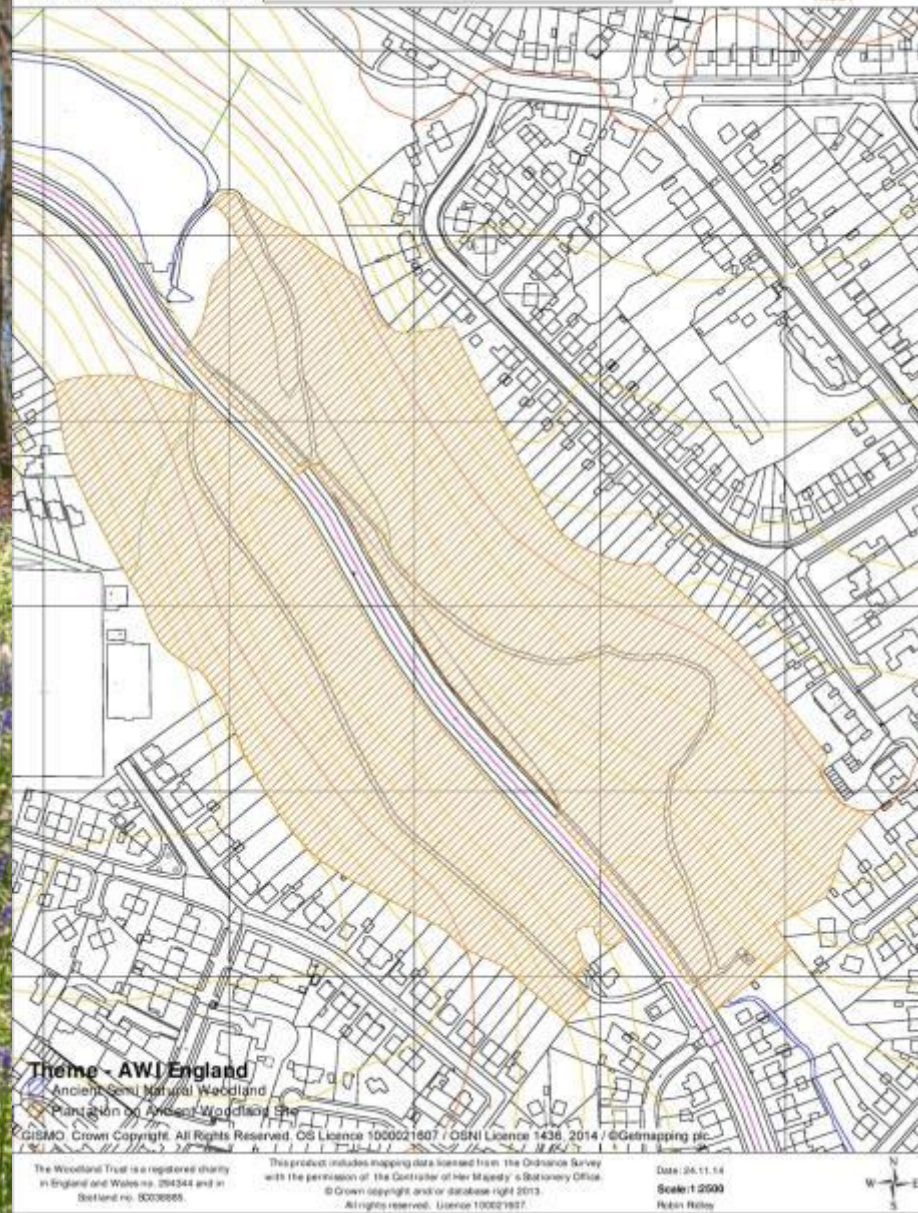
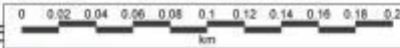
Ancient Woodland & Restoration



**WOODLAND
TRUST**

Gledhow Valley Woods - 3.52ha + 5.24ha

SE317364 + SE381365



Gledhow Valley Wood Area of PAWS

About the Woodland Trust:

- The UK's leading woodland conservation charity
600,000 members
- Planted 5.6 million trees in 2012
- Own and manage 1,200 woods across UK -
covering over 60,000 acres
- Over 18,000 acres of ancient woodland inc PAWS
- Undertake sustainable woodland management &
generates income from timber sales

The Heritage Lottery Fund Ancient Woodland Restoration project

5 year funded project 2013-18

Ambitious objectives including:

Engaging with over 1200 PAWS woodland owners

Assess over 23,000ha of PAWS designated woodland
Ground truthing, providing advice and simple report

Undertake a series of information exchange workshops
and events for Professionals, Owners and Community groups

Objectives continued:

Create an online AWR information hub

Publish revised AW Restoration guide books

Develop & deliver a series of CPD workshops for professionals

Deliver training workshops for woodland contractors

Develop a network of volunteer
Historic Researchers and Public Speakers



Supported by
The National Lottery[®]
through the Heritage Lottery Fund



Ancient Woodland & Restoration


WOODLAND
TRUST



PAWS in South & West Yorkshire

Based on Natural England's – Ancient Woodland Inventory

	No. of sites	% of sites	Area (Ha)	% of area
Threatened	191	54	2,589	71
Secure	164	46	1,045	29
Total	355	100	3,634	100

Legend		Threat Level	Hectares
	Secure (164)	Secure	1,045.22
	Threatened (191)	Threatened	2,589.67
	Ground truthed		

So - what is Ancient Woodland (AW)?

Ancient Woodland (in England) is defined as an area having been continuously wooded since 1600

Total UK tree cover is around 13%
Of which AW makes up around 2%
Of which only 1% survives in its semi-natural AW state

The other 1% of AW is made up of PAWS

Plantation on Ancient Woodland Site

Unique, precious & disappearing resource



Supported by
The National Lottery[®]
through the Heritage Lottery Fund



Ancient Woodland & Restoration


WOODLAND
TRUST



Diversity above ground



Supported by
The National Lottery[®]
through the Heritage Lottery Fund



Ancient Woodland & Restoration



WOODLAND TRUST



Diversity below ground

Mycelium – crucial for woodland health & welfare



Supported by
The National Lottery[®]
through the Heritage Lottery Fund

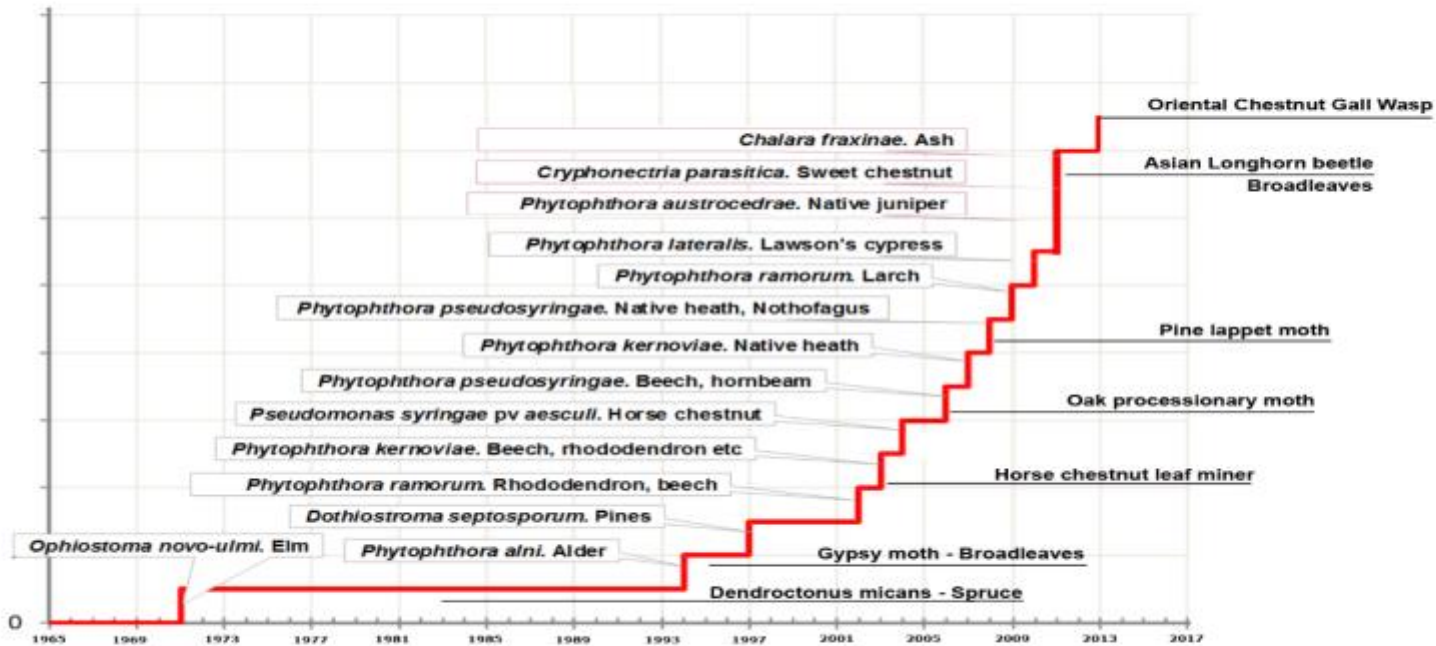


Ancient Woodland & Restoration



Why are we undertaking AWR?

To try and help mitigate against Climate Change, pests & disease by encouraging diversity & resilience



Source : www.forestry.gov.uk

PAWS Restoration – a gradual phased approach

Stages to restoration:

Survey and assessment

An informed Management Plan

Operational Plan developed into two Phases:

Phases 1 - Secure, maintain and enhance

Phases 2 - Long term gradual shift to SNW

PAWS Restoration – a gradual phased approach

Survey and assessment:

Identify what and where remnant features survive

Assess the level and nature of threat these features may be facing

E.g. Critical – needs urgent action to avoid irreversible loss or serious deterioration

Threatened – long term survival doubtful if no intervention



Supported by
The National Lottery[®]
through the Heritage Lottery Fund

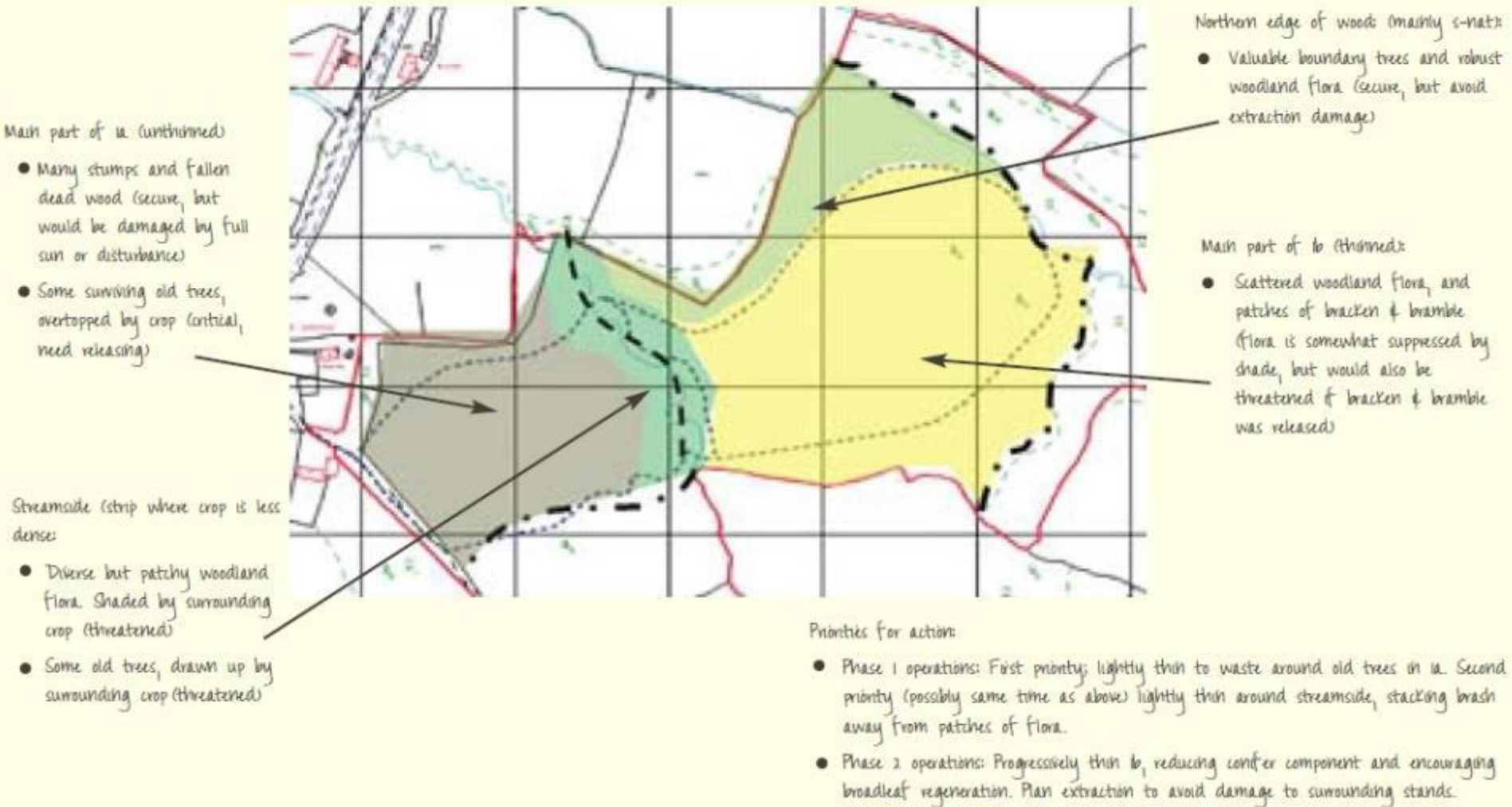


Ancient Woodland & Restoration



WOODLAND
TRUST

PAWS Restoration – identify features, assess threats



Features the grouped into general 'zones' by type

Woodland Communities and "hotspots":-

Tree canopy, understorey & natural regeneration

Woodland plant communities

Deadwood – standing and fallen

Archaeology – 'lumps & bumps'

Water courses – streams, wet flushes etc.

Woodland edges, rides and open spaces

PAWS Restoration – a planned, considered approach

Management Plan is informed by decisions based on site survey findings

Operational plans developed based on identified types, distribution and condition of and threats to - remnant features

Process of slow change
Adopting the “precautionary approach”
e.g. - gradual management of light levels



Supported by
The National Lottery[®]
through the Heritage Lottery Fund



Ancient Woodland & Restoration


WOODLAND
TRUST

PAWS Restoration – a phased approach

Phase 1 – Secure, maintain & enhance

Urgent action to a critically threatened feature –
‘Halo’ thinning around a crown stressed tree

Selective thin along a watercourse to reduce
heavy shade & encourage a ‘dappled’ effect

Open up closed canopy allowing light to forest
floor – encouraging natural regeneration &
recovery of field layer (flora) species



Supported by
The National Lottery[®]
through the Heritage Lottery Fund



Ancient Woodland & Restoration


WOODLAND
TRUST

PAWS Restoration – a gradual phased approach

Phase 2 – Long term steady shift towards a semi-natural woodland cover

Diversity in age, species and structure

To encourage resilience & robustness, against pests, diseases and Climate Change

Based on 2 year study for the Woodland Trust by the Oxford Forestry Institute
(part of the University of Oxford – Dept. of Plant Science)



Supported by
The National Lottery[®]
through the Heritage Lottery Fund



Ancient Woodland & Restoration


WOODLAND
TRUST

Recap:

The “precautionary approach” under pins AWR

1. Secure, maintain & enhance remnant features

2. The long term process of shifting toward SNW

‘The aim of AWR is to support the emergence of a diverse, semi-natural woodland with a range of species, physical structure and ages’

Urgency to start, but not to finish

Further information, research & reading:

Woodland Trust –

A range of publications;

Ancient Trees

Ancient Woodland management

PAWS Restoration

Membership

Forestry Commission & Wildlife Trusts
& many other sources



Supported by
The National Lottery[®]
through the Heritage Lottery Fund



Ancient Woodland & Restoration


WOODLAND
TRUST

Any quick questions for clarity ?
(there is time for discussion at end of the evening)

Thank you

Please feel free to contact me if you require
any further information

(Please remember to fill in the evaluation sheets !
Thank you!)